

Laboratory of Surface and Interface Physics

Department of Applied Physics

Applied Physics

Outline

Since 1990.... Biomimetic bone-like coatings, colloidal assembly, waterproofing, road paving, adhesives, paints, imbibition, biomaterials

Disciplines: Surface physics and material engineering

Concepts: Durable functional coatings with low(high)-adhesion properties for real-life applications. Wetting and drop dynamics.

Deliverables: Release (demoulding) coatings, anti-icing coatings, anti-biofouling surfaces...



Dr. Miguel Ángel
Rodríguez Valverde

<http://wpd.ugr.es/~marodri/>



Dr. Miguel Ángel
Cabrerizo Vílchez

mcabre@ugr.es



Dr. F. Javier Montes
Ruiz-Cabello

fjmontes@ugr.es



marodri@ugr.es

Wetting, adhesion, surface tailoring, roughness, durability



UNIVERSIDAD
DE GRANADA

Laboratory of Surface and Interface Physics

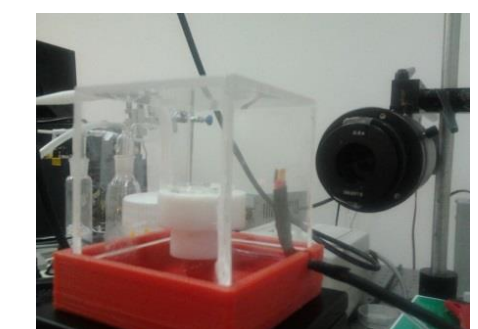
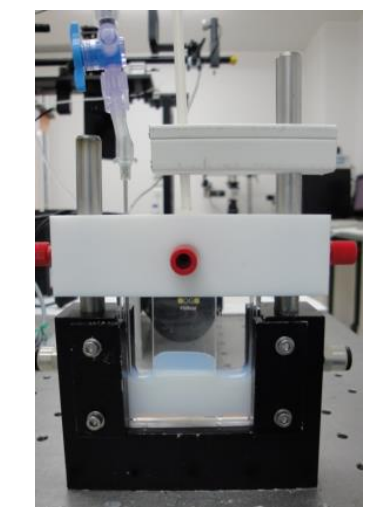
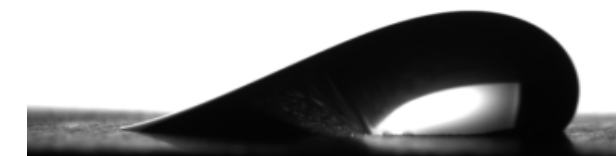
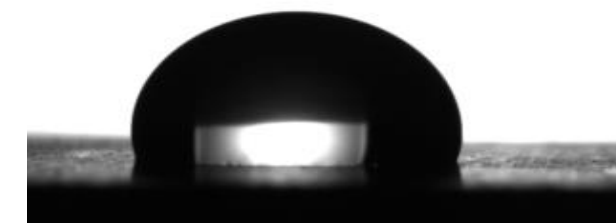
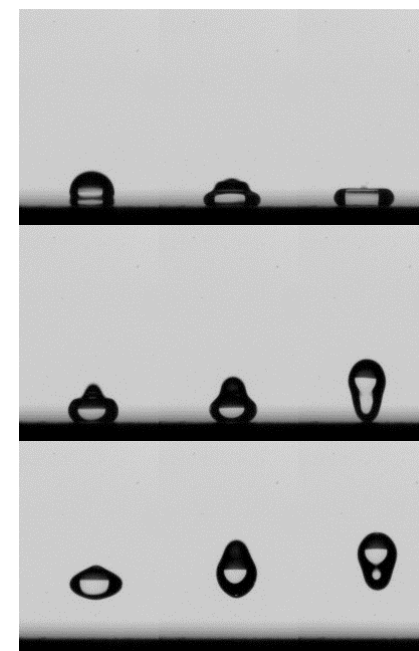


Expertise

Adhesion and wettability.

Facilities and instrumentation

- Wettability measurements
- Adhesion (pull-off) tests
- Dip-coating, spin-coating
- Surface topography
- Wear/abrasion tests, UV-Ozone
- Prototyping of scientific instrumentation



Laboratory of Surface and Interface Physics



We need...

- Physical vapor deposition (PVD) coatings
- Infrared thermography (IRT) for freezing drops (~mm)
- Water condensation measurement in/on small surfaces (Quartz Crystal Microbalance?)
- Groups specialized on surface coatings: low surface energy, durability, scale-up, aeronautics...

for...

NonSticky+

DISEÑO DE RECUBRIMIENTOS ANTI-ADHERENTES
MEJORADOS P12-FQM-1443



wpd.ugr.es/~nonsticky+

**Repel
Surf4Xtrm**

DESIGN AND PREPARATION OF LIQUID-REPELLENT
SURFACES OPERATING IN EXTREME CONDITIONS
MAT2014-60615-R



wpd.ugr.es/~repelsurf4xtrm

**LA
MetSurf**

FABRICATION OF LONG-LASTING LOW-ADHESION
METAL-BASED SURFACES
MAT2017-82182-R



Current partners

- TECNIMACOR, CETURSA, UCO, UYork



UNIVERSIDAD
DE GRANADA